



Installation Instructions

Please read the following instructions carefully before installing your Rockustics Garden Series speaker. If you have any questions regarding installation that are not answered in the following directions, please contact your local sound contractor or the Rockustics Service Department. Contact information can be found below.

Warning: Rockustics Speakers may be heavy, please use caution when lifting or handling.

Optimizing Speaker Placement for Best Sound

All Rockustics speakers can generate a high SPL (sound pressure level). Please be considerate of your neighbors.

Maximum acoustic performance should be an important factor in determining speaker placement. Here is how to achieve it:

- 1) Establish where the most likely or average listening position will be.
- 2) The speakers should be placed at or close to the same distance from that point.
- 3) The actual distance between the listening position and the location of the speakers is not critical. However, keep in mind that as the distance between listening area and speaker are increased, there will be a noticeable decrease in perceived volume.

Optimizing Aesthetics with Speaker Placement

All Rockustics products are designed with a boost in high frequency response to accommodate placement behind plants and other obstructions. Feel free to position the product within your landscaping, behind bushes or shrubs. Rockustics products strive to blend into the natural aesthetic of their surroundings.

Other Placement Considerations

- 1) When considering speaker placement be sure to account for the wires which will run from the product to your stereo or audio source. Be sure to keep in mind that walkways and patios may be difficult to get around.
- 2) All Rockustics Rock Series speakers are sealed and fully weatherproof. However, **DO NOT** place speakers where the drivers will be affected by a sprinkler system. Sprinklers typically have a high water pressure level that can damage speaker cones if hit directly.

Cautions

These are high quality outdoor speakers. **DO NOT** place soil or woodchips over the speaker grille. If the grille accumulates a build up of soil, it may damage the speaker. If build up does occur, simply rinse the grille with a hose set to a low pressure level.

Accumulated soil may also attract insect traffic into the speaker. Insects may eat through the speaker surround. Chemical sprays may also cause damage to the rubber of the speaker surround. This includes bug spray, deck sealant, some fertilizers and oil based products. Speakers **MUST** be covered when applying these treatments or chemicals in your yard.

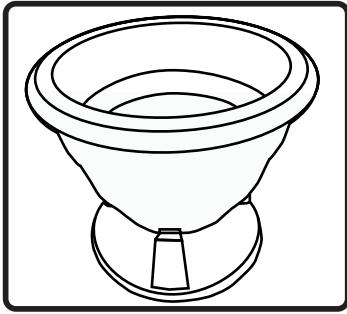
Maintenance

To insure that your Rockustics speaker provides years of listening enjoyment, we recommend gently rinsing the speaker grille periodically. Use a low pressure stream of water to remove any accumulated dirt or debris from the large speaker grille.



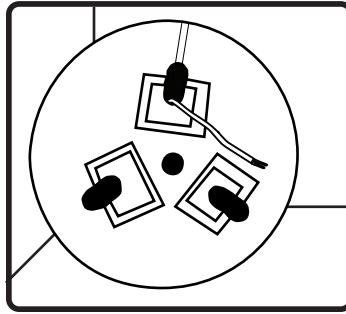
Garden Series | Planter, OmniPlanter™ 5.25, OmniPlanter™ 6.5, OmniPlanter™ 8.0, CocoNutz

Speaker Wiring: OmniPlanter 5.25, OmniPlanter 6.5, OmniPlanter 8.0, Planter

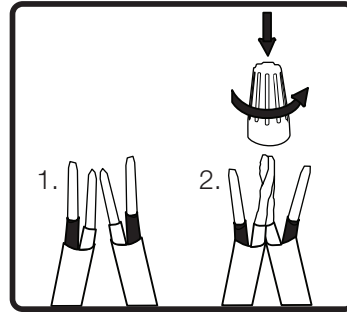


1. Unpack speaker from the box. Warning: Planter speakers may be heavy, please use caution when lifting or handling.

(OmniPlanter shown, instructions are the same for the square Planter model)

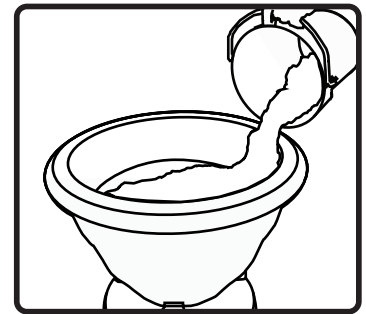


2. Locate speaker wire on the underside of the speaker. Strip wire ends if necessary.

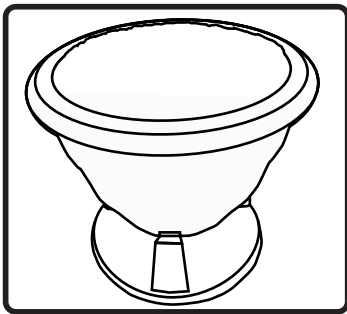


3. Connect the speaker wire to the input signal wire. Red is positive, black is negative.

Use included wire nuts to secure the connection. Step 2 is required to secure the negative connection, and then the positive connection.



4. Place speaker in desired location. Fill planter with pea-gravel to approximately 2" above the black insert box to ensure proper drainage. Gently rock the planter from side to side so that gravel fills in the gaps, providing ample coverage of interior black speaker box.



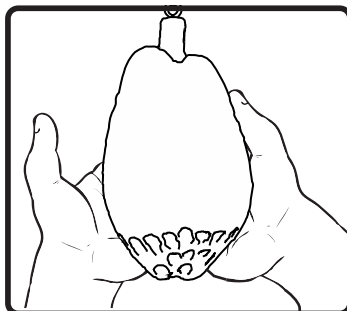
5. After filling with pea-gravel, fill with soil, and continue planting as you would any normal planter. Done.

Notice: The OmniPlanter loudspeakers are equipped with a PPC Transistor junction. This device will detect when your loudspeaker is being overdriven, and will prevent damaging current from burning the voice coil.

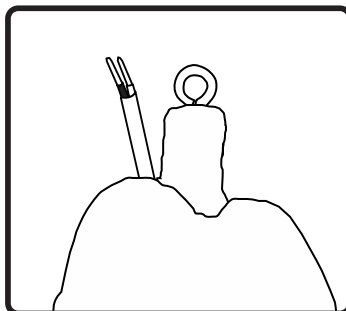
If you overpower this loudspeaker, you will notice a significant decrease in both output and clarity. If this happens, reduce the volume level and wait 30 seconds. During this time, the speaker will reset and resume playing at its new volume setting. If the speaker again goes into protection mode, reduce volume a few notches lower than the previous setting and resume listening. The loudspeaker will play uninterrupted when the correct level is reached.

Be sure to use the proper amount of pea-gravel and soil to fill the planter. The soil and gravel are important to the acoustic properties of the planter and assist with the proper bass reproduction.

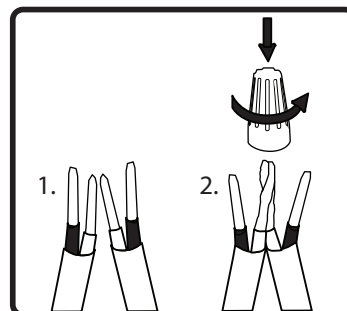
Speaker Wiring: CocoNutz



1. Remove speaker from the box.

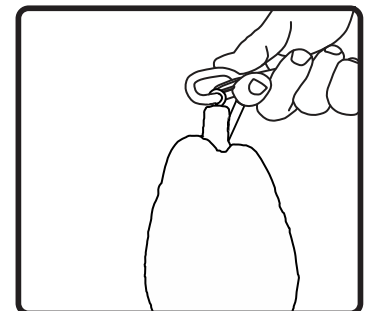


2. Locate speaker wire on the top of the speaker. Strip wire ends if necessary.



3. Connect the speaker wire to the input signal wire. Red is positive, black is negative.

Use included wire nuts to secure the connection.



4. Use eyelet on top of the speaker to connect to hanging point. Hang in desired location. (hanging hardware not included)

5. Done.